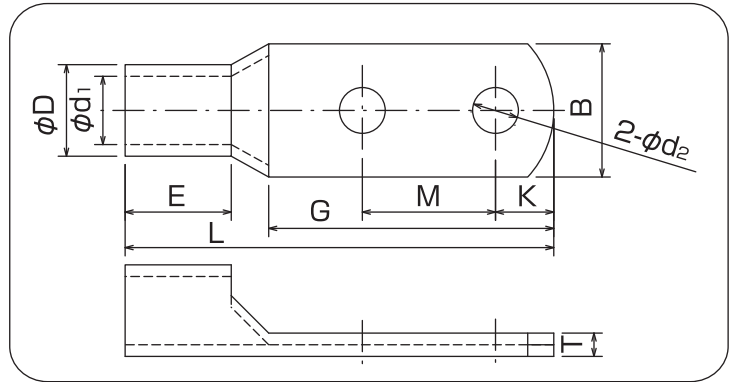


■PR-2型(2つ穴)



RoHSII P.1をご覧ください。(受注生産)

単位:mm

呼 び	ϕd_2	(B)	L	K	M	(G)以上	E	ϕD	ϕd_1	(T)	電線抱合容量(参考)	適合工具		
											撚線mm ²			
PR2-14	4	4.3	12.5	46	6.5	12	29	14	8.9	5.8	3	10.52~16.78	214A	9H-60 EP-1460 REC-Li60S
	5	5.3												
	6	6.4												
PR2-22	5	5.3	16	53	7	16	33	15	11.3	7.7	3.6	16.78~26.66	EP-150A REC-Li150 REC-Li200	12号A
	6	6.4												
	8	9												
PR2-38	5	5.3	19	62	8.5	16	36	18	13.2	9.4	3.8	26.66~42.42	EP-150A REC-Li150 REC-Li200	12号A
	6	6.4												
	8	9												
PR2-60S	10	11	22	86	13	28	56	20	15.4	11.4	4	42.42~60.57	EP-150A REC-Li150 REC-Li200	12号A
PR2-60L				90		32	60							
PR2-70S	10	11	25	90	13.5	28	57	22	17.5	13.3	4.3	60.57~76.28	EP-150A REC-Li150 REC-Li200	12号A
PR2-70L				94		32	61							
PR2-80S	10	11	27.5	95	13.5	28	57	24.5	19.4	14.5	5.1	76.28~96.3	EP-150A REC-Li150 REC-Li200	12号A
PR2-80L				99		32	61							
PR2-100S	10	11	31.5	99	14.5	28	58	25.5	22	16.4	5.7	96.3~117.2	EP-150A REC-Li150 REC-Li200	12号A
PR2-100L				103		32	62							
PR2-150S	12	14	38	120	16.5	32	68	34.5	26.4	19.5	7	117.2~152.05	REC-Li325	12号A
PR2-150L				128		40	76							
PR2-180S	12	14	41	124	16.5	32	70	36.5	28.5	21	7.7	152.05~192.6	REC-Li325	12号A
PR2-180L				132		40	78							
PR2-200S	12	14	46	133	20.5	32	78	37	32.2	24	8.5	192.6~242.27	REC-Li325	12号A
PR2-200L				141	21	40	86							
PR2-325S	12	14	53	144.5	20.5	32	83.5	42	37	28	9	242.27~325.0	REC-Li325	12号A
PR2-325L				152.5	23.5	40	91.5							

(注意) 各部の寸法は予告なく変更することがあります。()付き寸法は参考寸法を意味します。